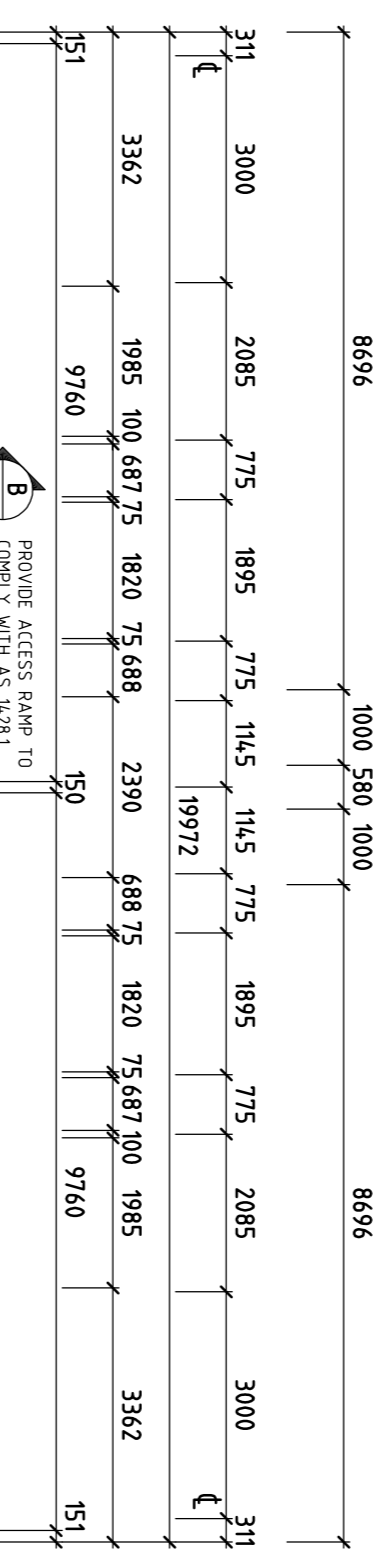
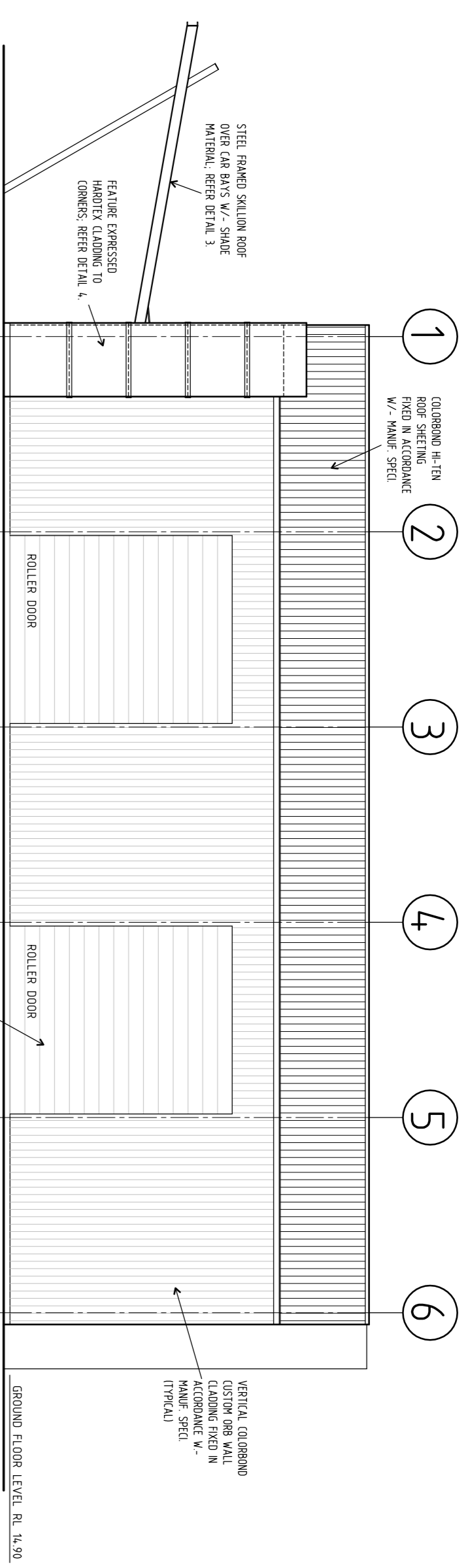
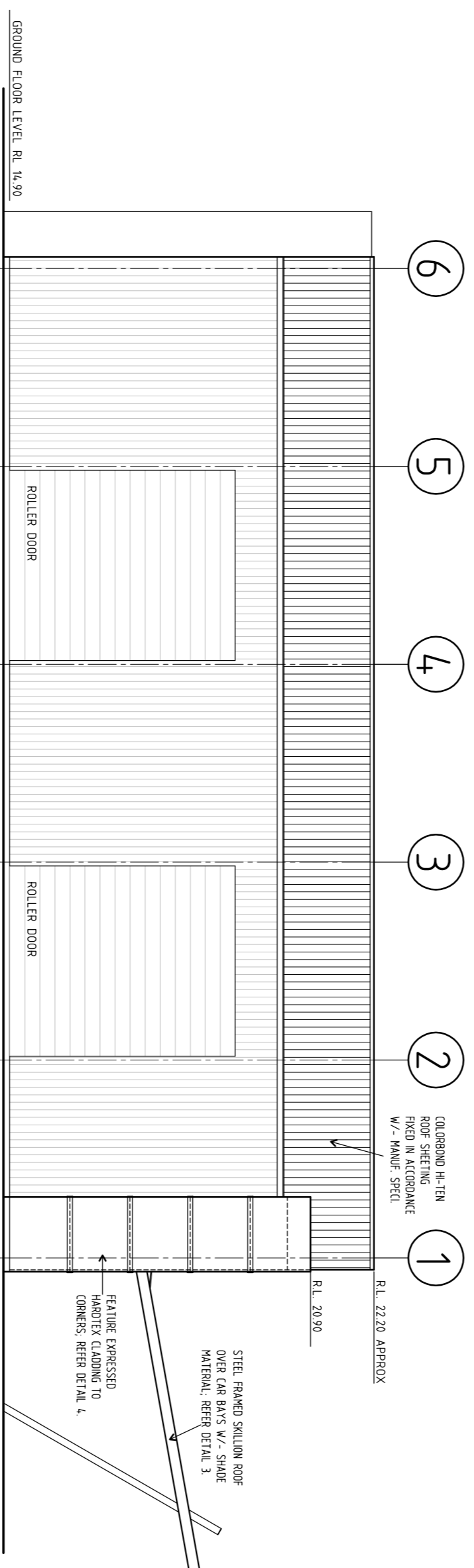
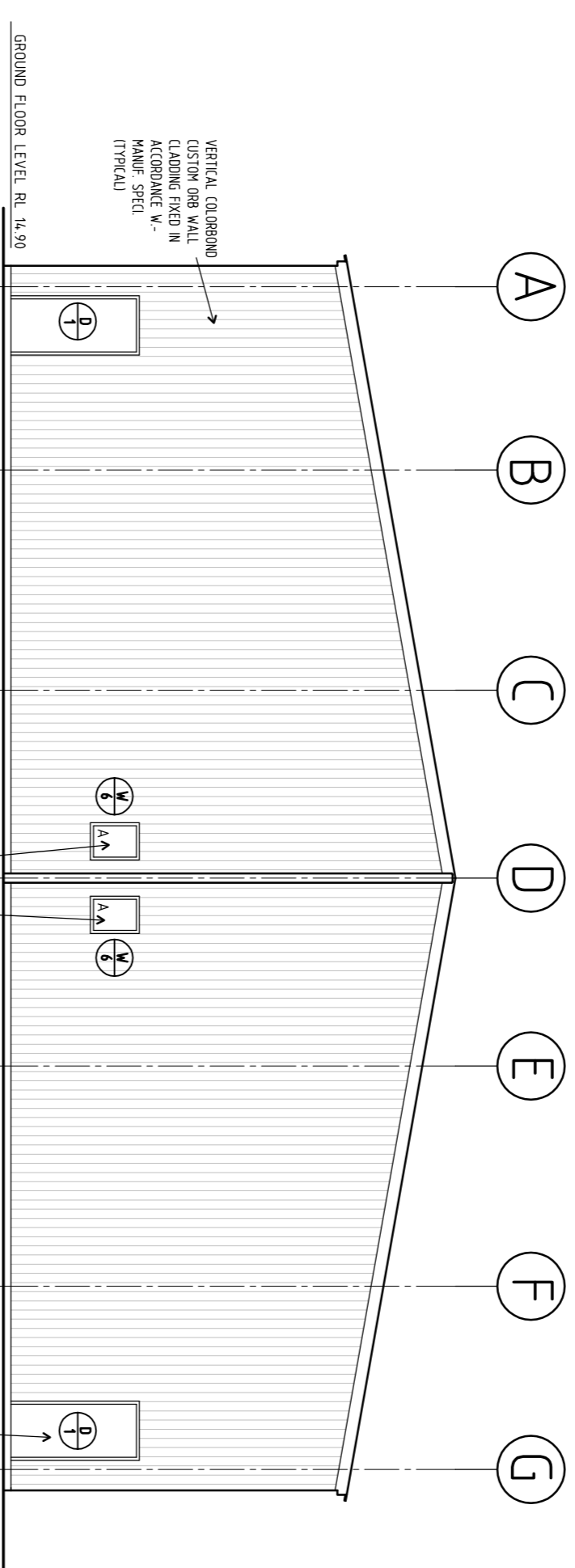


DRIVEWAY ELEVATION UNITS 3 & 4

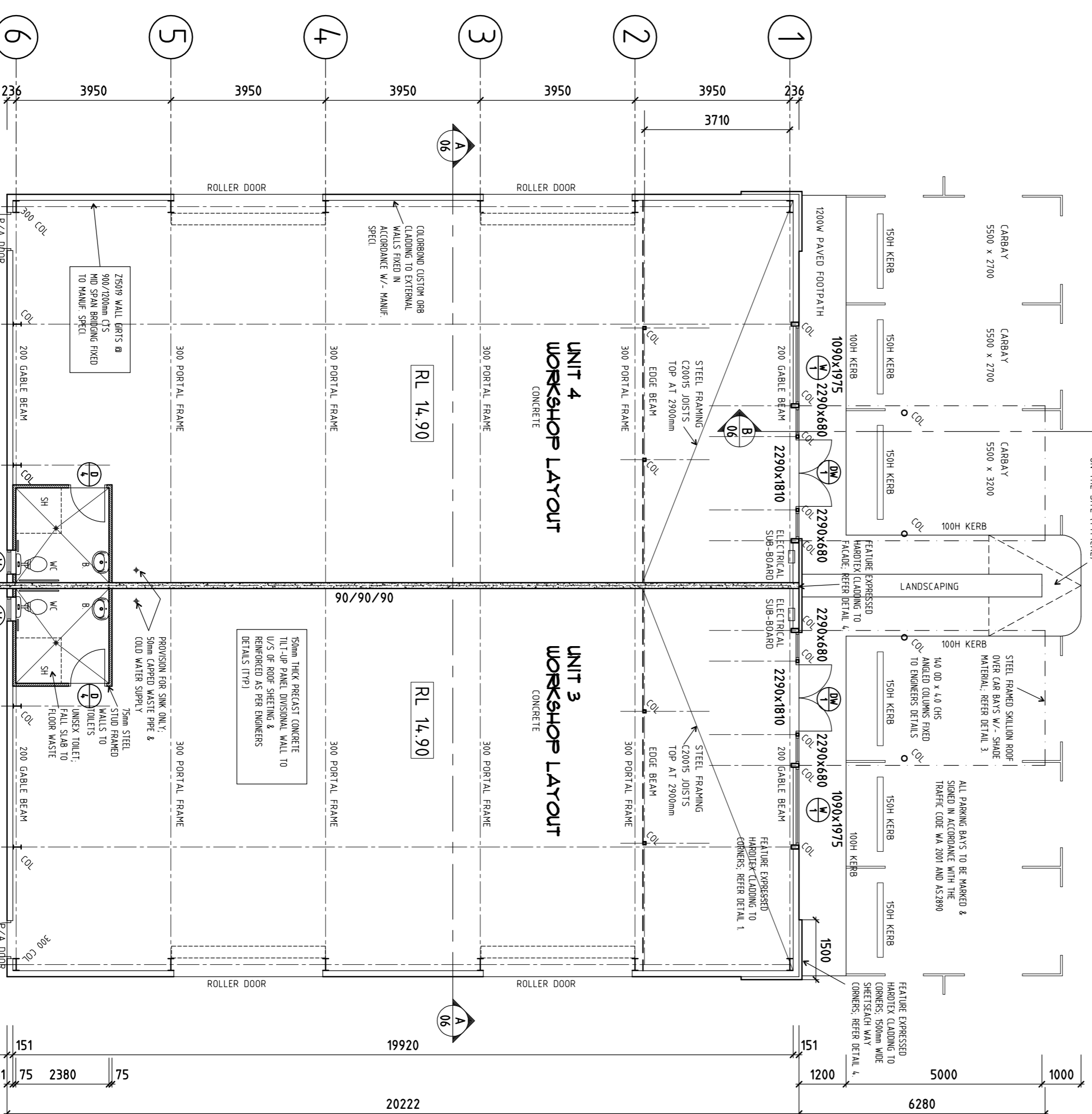
YARD ELEVATION UNITS 3 & 4



REAR ELEVATION UNITS 3 & 4



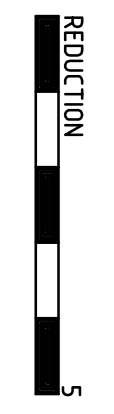
STREET ELEVATION UNITS 3 & 4



WORKSHOP GROSS FLOOR AREA 200 m²

- NOTES
- MAXIMUM SLOPE AT ALL THRESHOLDS TO COMPLY WITH BCA.
 - ALL SWITCHES TO BE LOCATED IN ACCORDANCE WITH AS-1483.
 - ALL DOOR HANDLE HEIGHT TO BE 1428.
 - FIRE REQUIREMENTS:
 - ALL WORKSHOPS & OFFICES TO HAVE PORTABLE FIRE EXTINGUISHERS WHICH ARE DISTRIBUTED IN ACCORDANCE WITH AS-1483.
 - SECTION 1, 2, 3 & 4 OF AS-2444.

UNITS 3 & 4
FLOOR PLAN
1:100



0	ISSUE FOR BUILDING LICENSE	AL	MM	AL	10/09/08
REV	DESCRIPTION	CHK. BY	DRN. BY	ISSU. BY	DATE

DISCLAIMER
This drawing and its contents are electronically generated, are confidential and may only be used for the purpose for which they were intended. Paul Meschati & Associates will not accept responsibility for any consequences arising from the use of the drawing for other than its intended purpose or where the drawing has been altered, amended or changed either manually or electronically by any third party.

PAUL MESCHATI AND ASSOCIATES
BUILDING DESIGNERS AND PLANNERS

DATE: SEPTEMBER 2008

PROJECT No. 2-32-008

SCALE: AS SHOWN

DRAWN: M/M

REVISION No. 0

PROPOSED INDUSTRIAL ESTATE
For: EDO CONSTRUCTIONS PTY LTD
On: LOT 965 WOODBROOK RD,
KARRATHA, W.A.

REVISION No. 0
SHEET 10 OF 08
A04/08

Paul Meschati & Associates
Suite 30, 18 Striding Hwy,
Nedlands, Western Australia 6009
Phone: (08) 6389 0706 Fax: (08) 6389 0708
Email: p.meschati@pglobal.net.au